

“SYKED-UP”

Newsletter ❖ Merry Christmas 2006



FUEL EFFICIENT Pump Range Complete



The fuel efficient Olympic Sykes Pump Range is now complete with the arrival of the CP100i 4”(100mm) self-priming pump. The Olympic pump models now cover the entire range of contractor’s pumps with suction and discharge connections available in 80, 100, 150, 200 and 300mm.

As well as being suited to Sykes Compressor Prime configuration, the range is also available in Sykes vacuum prime (VMX) and Hydraulic drive (HD).

The Olympic range’s ability to reduce fuel costs have added to the appeal of the new pump range. With the highest efficiencies on the market Sykes Olympic Pumps offer unmatched operating costs.

Suitable for a wide range of pumping applications Olympic pumps are ideal for the construction, mining, quarries, pipelines and sewage bypass operations. Like all Sykes Pumps, all Olympic Pumps are capable of pumping solids and running dry without damage.

The CP100i 4” (100mm) pump, the final model to complete the range offers flows to 60 l/sec and discharge head to 43m. With a fuel consumption of 1.48 l/sec the model clearly follows the rest of the range in providing better efficiencies and cost savings for users.



MODEL	CP/VMX 80i	CP/VMX 100i	CP/VMX 150iC	CP/VMX 150i	CP/VMX 220i	CP/VMX 300i
Connections (mm)	75x75	100x100	150x150	150x150	200x200	300x300
Max Head (mtrs)	28.5	43	44	60	64	54
Max Suction (mtrs)	9	9	9	9	9	9
Max Flow (l/sec)	40	60	153	175	225	440
Solids Handling (mm)	38	45	77	77	80	90
Approx Dry Weight (kg)	750	850	1150	1150	1600	3200
Fuel Consumption (l/hr)	1.9	1.48	3.2	5.18	8.1	15.7
Best Efficiency Point (BEP)	53%	71%	81%	74%	75%	81%

GRINDEX

Submersible Pumps for Irrigation

Grindex submersible pumps are not only ideal for construction, mining and dewatering applications but have proven to be ideally suited for irrigation purposes in rural dams.

A recent installation of a Grindex Maxi in a dam in Western NSW will be used to pump large amounts of water at low pressure to irrigation stations around the property. The Grindex pump was chosen over traditional irrigation pumps after proving to be better value with more cost efficient running at low pressures.

Grindex Pumps have the ability to run dry when the dam reaches extremely low levels, this means no damage to the pump and very little maintenance. Service requirements for Grindex Pumps are very low with servicing required only every 3 years.



The pump was installed in the centre of a 2 megalitre capacity dam. The Grindex Maxi pump was secured in place using a steel 'H' frame unit which sits on a concrete slab. This was a more practical solution than the more traditional floating pontoon given the dam's conditions. With dramatic changes in water level and varied depths across the dam, the frame will prevent the pump from becoming mounted on the sides of the dam or becoming trapped on higher ground than the water level.

Floats attached to stainless steel cable will allow for easy removal of the unit from the bottom of the dam. A frame constructed to secure the discharge hose can also be pulled to the surface of the dam along with the pump and frame.

The pump is remotely controlled from a station on the side of bank reducing the requirement to access the pump.



The Grindex Maxi pump and discharge hose are mounted to steel frames. The floats are attached to the pump using stainless steel wire and are used to locate the pump for bringing to the surface.



Why **YAKKA150** SUITS THE HIRE INDUSTRY

The beginning of a large delivery of Yakka150 pumpsets has been supplied to one of Australia's largest rental companies. The units will be supplied over the course of a few months and will form the largest fleet of Yakka150 pumpsets in the hire market.

Ideal for the rental industry the Yakka150 is efficient to run and offers excellent fuel consumption. Other features making the unit perfect for the rental industry include the unit's versatility, ease of use and compact and robust design.

The Yakka150 pod is mounted to a road registered single axle trailer for ease of towing from location to location and on site. As well as being more aesthetically pleasing the canopy is sound attenuated to provide relief from operating noise.

Suitable for a broad range of applications the Yakka150 is ideal for hire to customers in the construction, municipal, water treatment, mining and quarrying industries.

Like all Sykes Pumps the Yakka150 is able to operate in 'snore' conditions enabling it to be run without supervision. It also has stainless steel internals and engine protection as standard, lowering maintenance costs and downtime.



SYKES' African Expansion



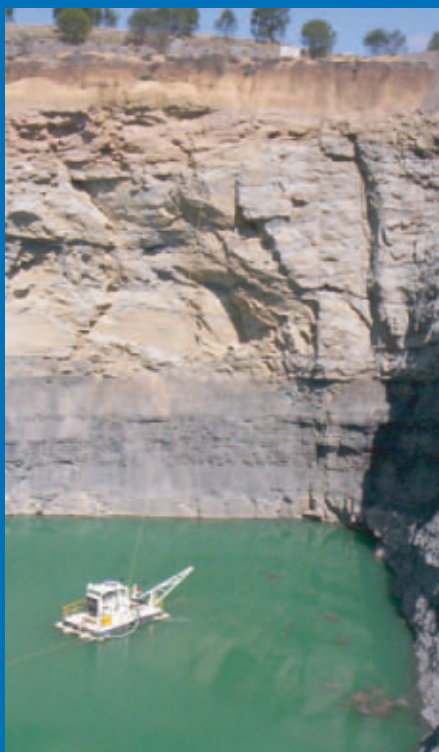
Sykes Group continues to expand with the addition of a South African office.

Colin Bracken has joined the Sykes sales team as Regional Manager – Africa. Based in Johannesburg, South Africa, Colin will service the African Region offering more localised support.

With a strong background in the African pump industry Colin will be a great asset to the Sykes team as well as Sykes global expansion.

There is a strong mining presence in Africa with gold, diamonds and platinum mines across the continent. Sykes has experience in mining applications worldwide, and as a result Sykes Pumps are designed to suit some of the harshest conditions in the world making them a perfect fit for the African market.

Hard Working **PUMPS**



One of QLD's leading export coal operations has a unique pump setup to supply water for use at the wash bay and other services around the mine. A Sykes XH150 Xtra high head pump is pontoon mounted in one of the mine's dams where it is tied into place with 2 lengths of poly pipe, one down each side of the pontoon. Low maintenance requirement is the key to the success of the pump with the only access to the pump being a 1km boat ride.

The pump is working 24 hours a day 7 days a week. The fuel is fed from a tank on top of the highwall to a small header tank on the pontoon which is fitted with a float valve to control the head pressure of the fuel.

The pump is only operating at 1400 rpm with a static head of approx 80-90m. Three thousand metres of 200mm poly discharge hose is used with the discharge point being at around 60m. Due to the pump unit's inaccessibility, service has to be kept to a minimum. The Sykes XH150 pump has oil lube bearings and a Glycol lubricated and cooled mechanical seal. Running at low revs the auto-priming pump unit is ideal for the application as the only real service required is to the Diesel Engine.



Abu Dhabi CONSTRUCTION BOOM



Sykes are dewatering various construction sites across Abu Dhabi including residential, hotel, industrial, commercial and educational sites.

Abu Dhabi, the capital of the U.A.E is undergoing its biggest construction boom in 20 years. Total investments in construction projects during 2006-2007 are expected to reach AUD\$16.4 billion, including commercial and residential buildings, airport infrastructure, industrial parks and work for government institutions and road construction.

Many of the developments address the housing requirements of the emirate. With the population of Abu Dhabi expected to double in the next 10 years, approximately 250,000 new units of housing will be required to meet demand.

With a push to triple the annual tourism figure to 3 million visitors per year by 2015, numerous hotel projects are under way to add 25,000 rooms in the next decade from the current 2,500. Abu Dhabi International Airport will also be expanded to accommodate the influx of visitors

Sykes Pumps have proven to be fuel efficient and reliable in the UAE having proven their suitability after extensive use on construction sites in Dubai and the high profile Palm and Pearl Island projects.

Sykes wellpoint dewatering system is one of the most efficient on the market allowing for the ease of setup and removal as well as simple operation. The system is lightweight and robust with control valves which permit consistent trimming of the system to ensure optimum dewatering performance.

140 Sykes Pumps Dewater Airport

Over 140 Sykes FMX150i pumps are currently in use onsite to constantly dewater the construction site for the new Doha International Airport. The airport in Qatar is being developed as a major aviation hub for traffic between Far East-Australasia and Europe-North America, with an ultimate capacity of 50 million passengers.

Phase one of the construction will take approximately 5 years and will involve site preparation, land reclamation, construction of runways and passenger terminals as well as navigation and maintenance facilities. Over half of the land required to build the airport will need to be reclaimed from the sea. The airport is to be constructed near the city of Doha and, when finished, will be approximately two-thirds the size of the city.

Sykes FMX150i pumps were chosen for the application for dewatering operations as they are able to achieve flow rates of 130 L/sec with high efficiency and low fuel consumption.



DRAGFLOW PUMPS

Effectively handling mill scale

The problem of moving large amounts of abrasive mill scale from steel mills can be costly in terms of pump maintenance and downtime. In hot-rolling mills, mill scale is created during the reheating process. The size of mill scale ranges from a few microns up to the size of a tennis ball and is heavy and very abrasive.

A key role for pumps in mill scale applications is to remove the mill scale accumulated in a sump under the hot rolling mill. Traditionally long shaft pumps are used which are cumbersome and difficult to handle particularly during repairs. They also experience extensive wear and tear as a result of the abrasive mixture. Dragflow pumps are a more durable and compact solution. As well as being easier to handle in confined spaces they are removable for easy access during maintenance.

Dragflow pumps are specially designed to pick up solids from rest and mix them into a highly dense slurry so they can be pumped with ease which means no more build up of scale in sumps. Designed to handle fast settling, high specific gravity solids including mill scale, the agitator is the key for picking up material from rest. The agitator is used to physically and hydraulically force material away

from the pump's suction. Doing this creates a "down pressure" stirring up material below the pump's suction. Material too large to enter the pump's suction is repelled and does not plug the suction screen. This means no more build up of solids in sumps which not only cause damage to existing pumps but is very expensive to remove.

Dragflow wearparts are made of high chromium steel and unlike competing pumps, do not need to be ceramic coated to deal with the mill scale applications. Dragflow Pump operation is perfectly suited to mill scale applications because of it's oversized motors and low operating rpm, wear and tear are greatly reduced and as a result higher reliability has proven the Dragflow Pump to be the cost effective option.



2400e The Efficient Solingo

Sykes Safeway has responded to market demands with the development of the New Solingo 2400e. The range now consists of 3 signs. The Solingo 1800 which is a compact trailer mounted unit designed to cater to smaller areas, the Solingo 2400 which is perfectly suited to larger areas and sites with multilingual requirements, and the new efficient Solingo 2400e.

Both the 1800 and 2400 models offer unmatched visibility and premium quality LED technology. The signs have full matrix capability to display multiple character sizes, arrows, high definition graphics and symbols. The ability to display multilingual text and complex images including logos make the signs suited to the sales and advertising market. This too is a feature compatible with the rental market where versatility is paramount.

The New Solingo 2400e is an adaptation of the original Solingo offering the same visually conspicuous features and new low power drawing LED's. The LED's are just as bright as on the original models however make the sign more energy efficient. The 2400e does not offer the full matrix ability of the original signs however is well suited to industries requiring basic sign displays.

The 2400e offers simple operation and extremely low maintenance, as well as the ability to hold 40 pre-programmed messages and 88 user defined messages.



Sykes Exhibit in CHINA



Sykes Group proudly exhibited at the China Coal Expo at the beginning of the month in Beijing, China. Representatives from Sykes' distributor Rina Co Ltd attended the exhibition along with Sykes Managing Director, Jon Collins and Asian Regional Manager, Mike Brewer.

The demand for pumps in the Chinese market is extensive and the response from the show has been impressive. Sykes' Mike Brewer was impressed with the qty and quality of enquiries at the Chinese exhibition and is looking forward to what the future holds within the Chinese Market.

Sykes Asian office is located in Jakarta Indonesia and services the entire Asian Region. For further information about Sykes products and office locations visit our website www.sykesgroup.com.



Rico Tan, Mike Brewer & Jon Collins

Do you have an old SYKES PUMP?

With the dawning of 2007 Sykes look forward to celebrating the 40th anniversary of Sykes in Australia. Since being established in Australia in 1967 Sykes has developed with the Australian and worldwide markets to become a market leader in the self priming pump industry.

There are a lot of old Sykes Pumps still in operation around Australia, some of which are nearing 40 years old. Whether they be 'Henry Sykes Pumps', 'Hanson Sykes Pumps' or 'Sykes Pumps', they are all part of the history of the Sykes Group as it is known today.



We'd like to hear about your old pumps and share some pictures and your stories with other users of Sykes Pumps. If you would like to share a story about an old pump and help to celebrate 40 years of Sykes, please contact 02 98944577 or email syd@sykesgroup.com.



Head Office & Manufacturing
42 Munibung Road, Cardiff NSW
AUSTRALIA 2285
Tel: +61 (0)2 4954 3333,
Fax: +61 (0)2 4954 3303
Email: info@sykesgroup.com

SPARE PARTS & SERVICE
1800 13 19 50

SYDNEY
+61 (0)2 9894 4577

NEWCASTLE
+61 (0)2 4954 3333

WESTERN NSW
0423 029 183

BRISBANE
+61 (0)7 3382 7600

TOWNSVILLE
+61 (0)7 4725 4244

ROCKHAMPTON
0427 543 323

PERTH (WA, NT)
+61 (0)8 9248 4944

KALGOORLIE
+61 (0)8 9091 7399

MELBOURNE (VIC, SA, TAS)
+61 (0)3 9543 2000

AUCKLAND
+64 (0)9 278 8300

CHRISTCHURCH
+64 (0)3 344 2100

USA
+1 661 665 9495

MIDDLE EAST
+971 4881 1599

AFRICA
+27 (0)83 395 7377

INDONESIA
+62 21 750 0080

FREE SUBSCRIPTION

Please complete the following 3 sections and fax back to:
Fax: +61 (0)2 9894 4532.

1 _____

Subscribe me to E-News

Email

2 _____

Subscribe me to Syked-Up Newsletter

Name Position

Company

Postal Address

State Post Code Country

Tel Fax

3 _____

Please tick appropriate boxes:

INDUSTRY

- Engineering
- Mining
- Council
- Government
- Manufacture
- Hire
- Industrial
- Contractor
- Other (Please Specify)

PRODUCT OF INTEREST

- Sykes Pumps
- Portable Traffic Lights
- Variable Message Signs
- Speed Advisory Signs
- Grindex Pumps
- Dragflow Pumps

